

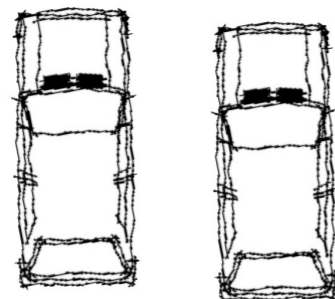
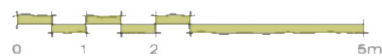
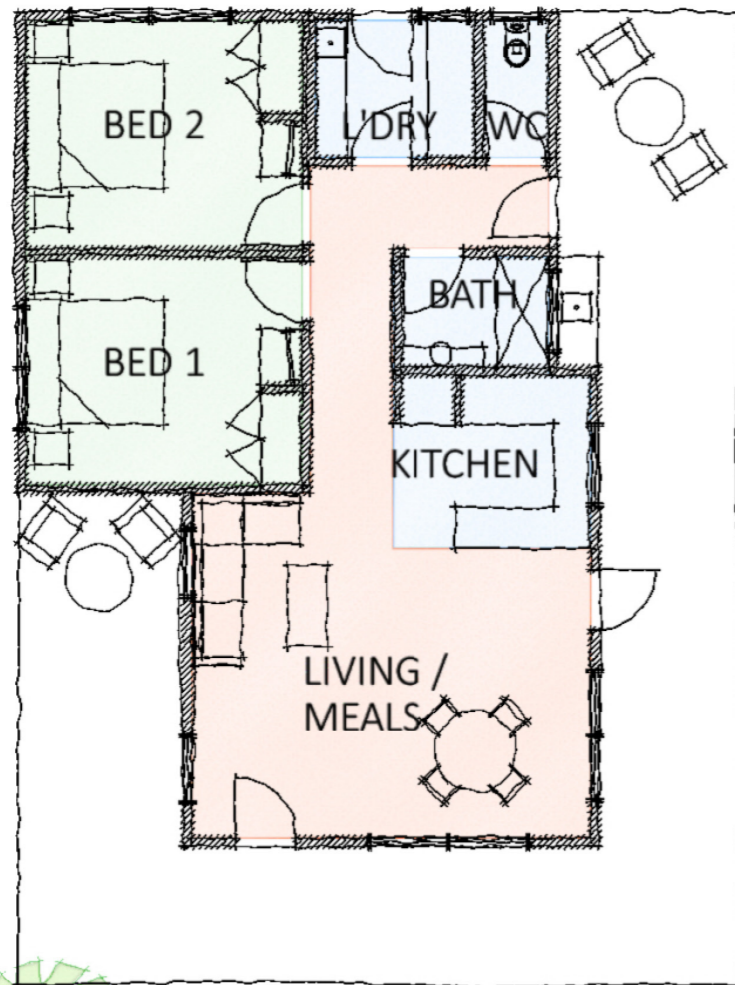
\$395,000

2 BED 1 BATH

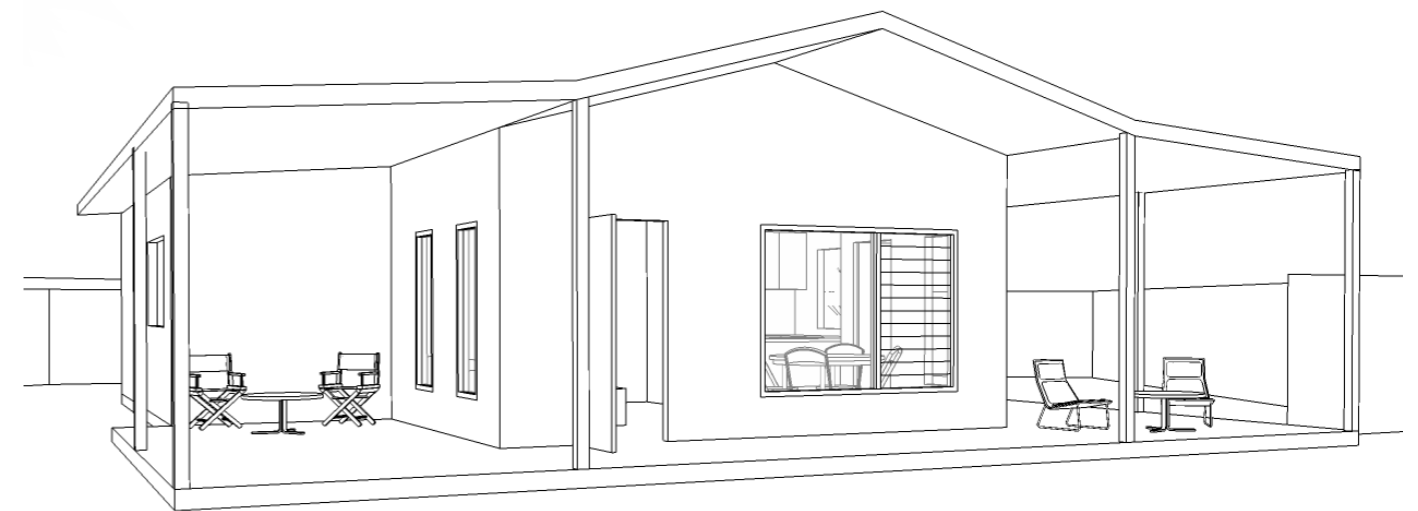
This home will suit smaller family groups. The open plan design allows flexible use of the living and dining areas as potential additional sleeping zones.

HOME A

- The selection of durable fixtures and finishes is undertaken in consultation with residents.
- The home complies with the National Indigenous Housing Guide with a focus on personal and family wellbeing though attention to health and safety.
- Engineer designed reinforced concrete slab for durability and thermal efficiency.
- Lockable storage in each bedroom.
- Choice of wall cladding material– Colorbond Custom Orb or JH Scyon in a large selection of colours.
- Lightweight construction on a concrete slab with a high level of insulation in ceilings and walls to help moderate internal temperatures.
- Windows placed to encourage cross-flow-ventilation.
- Plenty of storage, including lockable cupboard, in kitchen pantry.
- Choice of internal colour schemes.
- Passive design principles, environmentally responsible and energy efficient.
- Solid external and internal doors.
- Anti-mould paint in all wet areas.
- Powdercoated aluminium doors and windows with security screens.



*furniture not included



HOME A